

QUANTUM RECOMMENDED MAINTENANCE PROCEDURES

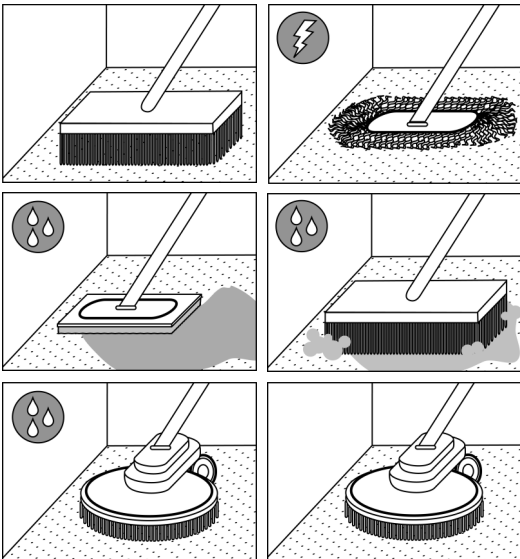
Initial Care:

After installation is completed:

1. Remove all debris (electrostatic mop or vacuum).
 2. Damp mop using Armstrong Flooring **Once 'n Done** Floor Cleaner (*or similar pH 7.0-8.5 neutral cleaner). Allow 48 hours before carrying out the following:
 1. Mop using electrostatic dust mop or vacuum
 2. Damp mop or light scrub if necessary. Wet scrub using automatic scrubbing machine or single disc polisher ≤ 600 RPM and Armstrong Flooring **Once 'n Done*** Floor Cleaner.
 3. Dry burnish – burnishing should only be carried out on a clean floor using a single disc straight line polisher up to 1700RPM, use white pad only (this process enhances floor protection).
 4. Spray burnish if desired using Armstrong Flooring **Once 'n Done*** Floor Cleaner.
- Dilute chemicals to appropriate levels for each application as per instructions on container.

Routine care:

Daily: Sweep, vacuum, static mop. Regularly damp mop, wet scrub and burnish; use **Once 'n Done** Floor Cleaner (*or similar pH 7.0-8.5 neutral cleaner). Frequency and type of maintenance required depends on traffic flow, application, environmental conditions and customer requirements. **Light and accent colours** can require more maintenance, where practical choose darker, more camouflaging colours.



Daily:

- Sweep, static dust/microfibre mop, vacuum thoroughly to remove all dirt and dust.

Daily / Regular:

- Damp Mop (Nylon/Rayon/Microfibre)

Regular:

- Spot scrub edges & fixtures using soft bristled broom and **Once 'n Done** Floor Cleaner *.

Regular: Large & unobstructed areas,

- Wet Scrub using automatic scrubbing machine or single disc polisher ≤ 600 RPM (use medium nylon brush, red or blue pad) and **Once 'n Done** Floor Cleaner *.
- Dry Burnish clean floor using a single disc straight line polisher up to 1700 RPM (Spray burnish if desired using **Once 'n Done** Floor Cleaner. Use white pad only (3M™ TopLine Speed Burnish Pad 3200 or similar).

Protection:

Use walk-off mats that are as wide as the doorway entrances and long enough (min. 3 average paces) to trap dirt before reaching the resilient floor. Ensure that walk-off mats are cleaned frequently.

Sand and grit are abrasive and can damage floors; stopping dirt at the entrance means less dirt trafficked through the building, protecting your investment and helping keep maintenance costs down.

Ensure all furniture legs have well maintained non-abrasive feet. Exposed metal legs can damage flooring.

Rubber products such as chair feet, tyres & mats can stain flooring, do not leave these in contact with flooring.

Stain Removal:

Treatment should be carried out when stains are fresh, immediately remove contaminant. Spot clean with a neutral floor cleaner using soft nylon brush. After stains have been removed, rinse floor with clean water and allow to dry.

Warnings & General Hints

1. DO NOT USE: Highly acidic, alkali, caustic or solvent agents such as hydrochloric/sulfamic acid, toilet bowl cleaner, paint stripper, benzene, toluol, acetone or strong scouring powders, as these will damage the floor.
2. All vinyl flooring should be protected during the construction period. Armstrong Flooring does not recommend covering our PVC floor or wall products with plastic materials (such as builders plastic, corfluke, carpet protector film etc). Adhesive residue may be removed using a clean white cloth dampened with small amounts of mineral turps, carefully following warnings on container, immediately rinse with clean water (test in inconspicuous area first)
3. Auto scrubbing in unobstructed areas takes approximately 20% of the time of damp mopping. For maximum efficiency use damp mopping in obstructed areas only.
4. Spot mopping / spot scrubbing should be used when necessary. **Spillages** – post wet floor signs and wipe up immediately. Allow to dry and remove signs.

For further Armstrong Flooring information:

Freecall 1800 632 624

www.armstrongflooring.com.au